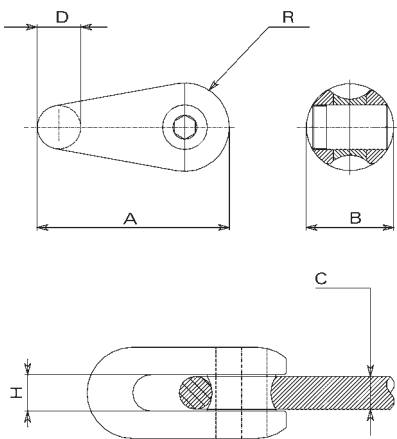


The connectors are specifically designed to connect pilot rope lengths or pulling rope lengths and to pass over the puller or puller-tensioner bull wheels. The special profile minimises the overload on the rope spliced eyes during this passage. They are made of highly tensile galvanised steel

Certified Quality System  
ISO 9001:2000

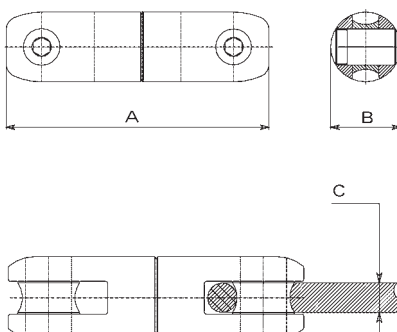


### CONNECTORS Mod. GFT

Model	Dimensions [mm]						Breaking load [kN]	Mass [kg]
	A	B	C max	D	H	R		
GFT 001	59	28	10	15	11	11	70	0.125
GFT 010	73.75	40	13	19.5	14	15	110	0.325
GFT 020	91	48	16	20	19	18	160	0.525
GFT 030	102	54	18	22	19	20	220	0.750
GFT 040	121	60	24	27	26	22	360	1.025
GFT 050	174	75	28	42	30	32	750	3.025
GFT 060	183	81	32	42	34	34.5	750	3.400

The swivel joints are suitable to connect the pulling rope to the mesh sock joint mounted on the conductor; they are mounted on thrust bearings and they are designed to avoid torsion strain accumulation.

They are made of highly tensile galvanised steel; the special design can bear the high radial loads, which occur during the passage over the pulleys



### SWIVEL JOINTS Mod. GGT

Model	Dimensions [mm]			Breaking load [kN]	Mass [kg]
	A	B	C max		
GGT 001	106	28	10	70	0.300
GGT 010	143	40	13	110	0.925
GGT 020	184	54	18	220	2.150
GGT 030	234	60	24	360	3.400
GGT 040	322	77	28	750	8.200
GGT 180	336	81	32	750	8.700